

Ports of Minehead and Watchet

NOTICE TO MARINERS

No 9 of 2021

FUGRO WAVE BUOY

Station Latitude Longitude

51°13.6759'N - 03°28.1475'W

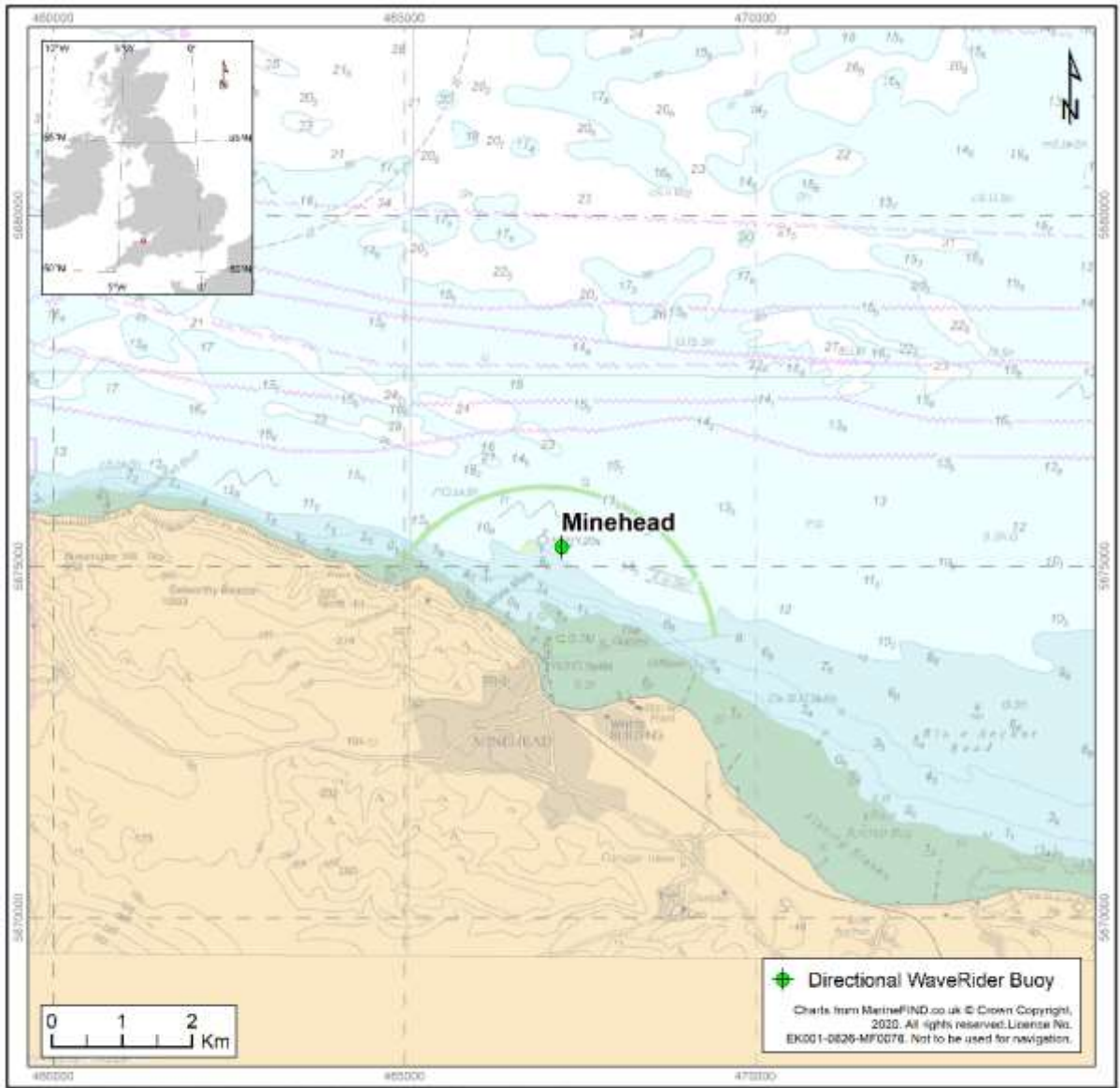
Figures showing the Minehead wave buoy's location and associated mooring are given in Figures 1 and 2.

Mariners are kindly advised to adhere to the following:

- Give 200 m minimum clearance from the buoy to avoid tangling with the mooring components present near to the surface;
- Refrain from deploying any fishing gear in the vicinity of the buoy to reduce the danger of entanglement and equipment loss;
- Do not moor to any part of the deployed mooring or buoy.

The buoy is moored using a rotational, and therefore tidally influenced mooring design, with two 15 m rubber bungees close to the surface (Figure 2). Mariners are requested not to pass within 200 m of the buoy, to avoid the danger of vessel entanglement or mooring damage.

The wave buoy is 0.9 m in diameter and is painted yellow. The buoy has a yellow flashing LED light on top of a 2 m long HF aerial transmitter (flashing 5 times every 20 seconds). In addition, the buoy is equipped with radar reflectors. The words NO MOORING and Channel Coastal Observatory are displayed on the buoy.



Map Document: (S:\430-MOC-T\CherlingM160706_SWRCMP3_Path2_DraftM160706_Buoy_Location.mxd)
 04/02/2020 - 10:30:39

Figure 1

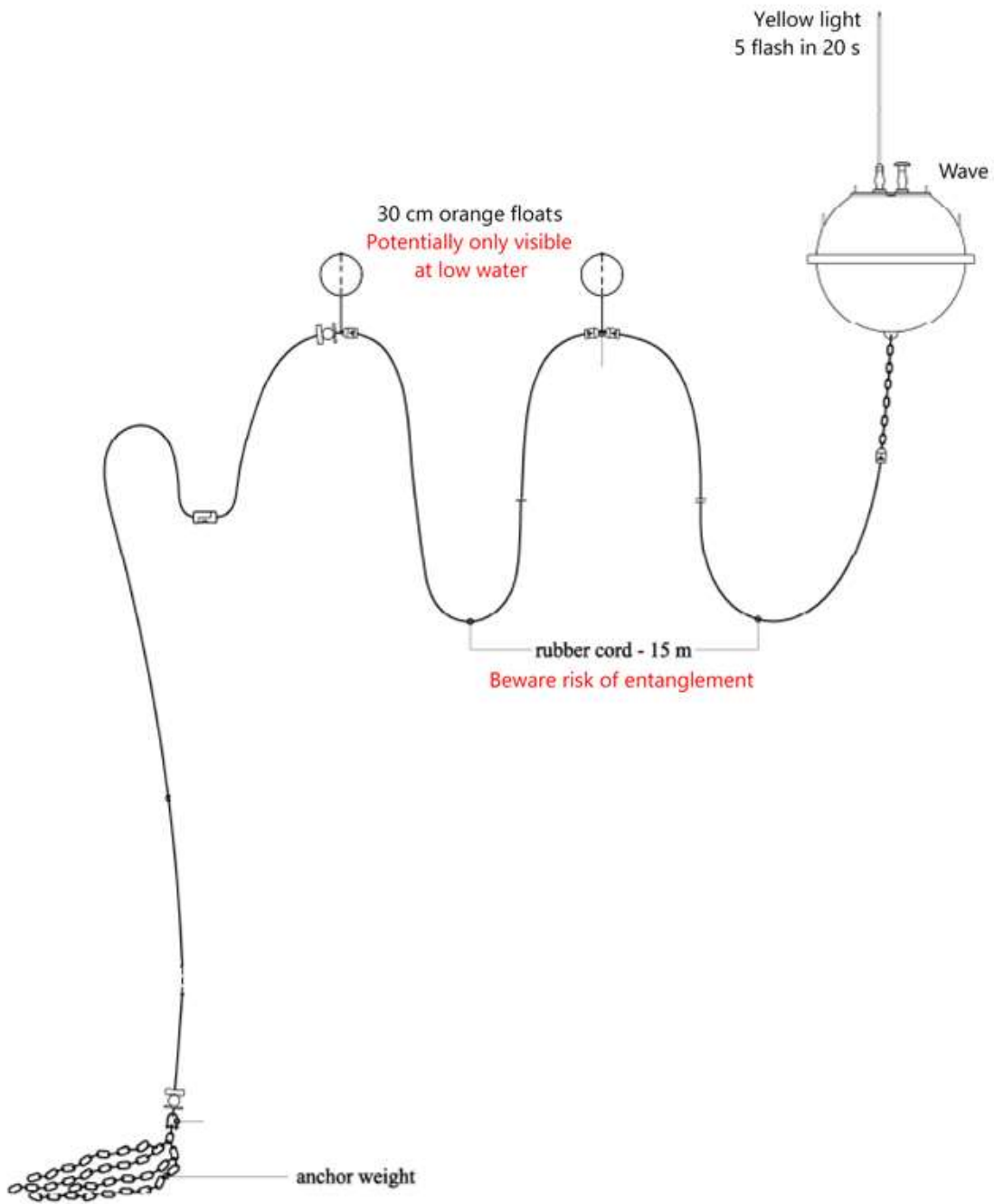


Figure 2.

All Watchet and Minehead Notice to Mariners are available on the website at;

<https://www.somersetwestandtaunton.gov.uk/harbours/notices-to-mariners/>

Harbour Master

Minehead and Watchet

28/06/2021